

Mikrotik preparation and configuration

Business-VPN module **WHMCS**

[Order now](#) | [Download](#) | [FAQ](#)

Note: **Enter the following commands one by one and wait for the command to complete.**

I. Check RouterOS version

Make sure that the version of RouterOS is 7+

```
system/package/print
```

II. Enabling HTTPS Create your own root CA on your router

```
/certificate  
add name=LocalCA common-name=LocalCA key-usage=key-cert-sign,crl-sign
```

III. Sign the newly created CA certificate

```
/certificate  
sign LocalCA
```

IV. Create a new certificate for Webfig (non-root certificate)

Note: as common-name=XXX.XXX.XXX.XXX You enter public IP address of the router.

```
/certificate  
add name=Webfig common-name=XXX.XXX.XXX.XXX
```

V. Sign the newly created certificate for Webfig

```
/certificate  
sign Webfig ca=LocalCA
```

VI. Enable SSL (*www-ssl*) and specify to use the newly created certificate for Webfig

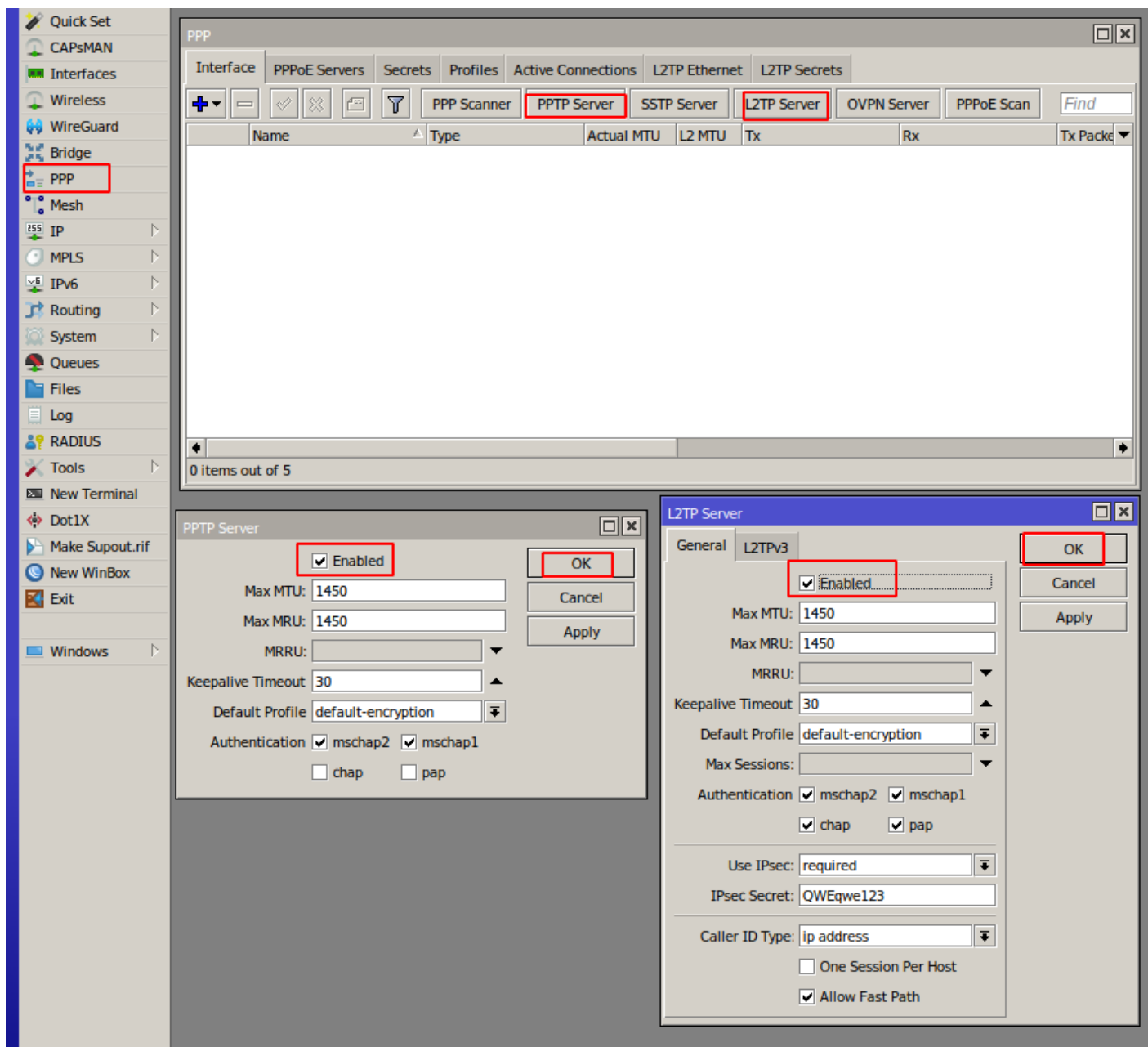
```
/ip service  
set www-ssl certificate=Webfig disabled=no
```

VII. Enable api-ssl and specify to use the newly created certificate for Webfig

```
/ip service  
set api-ssl certificate=Webfig disabled=no
```

VIII. Enable VPN server

To enable the VPN server



Revision #11

Created 18 October 2022 09:10:32 by Ruslan

Updated 11 June 2024 09:46:38 by Yuliia Noha