



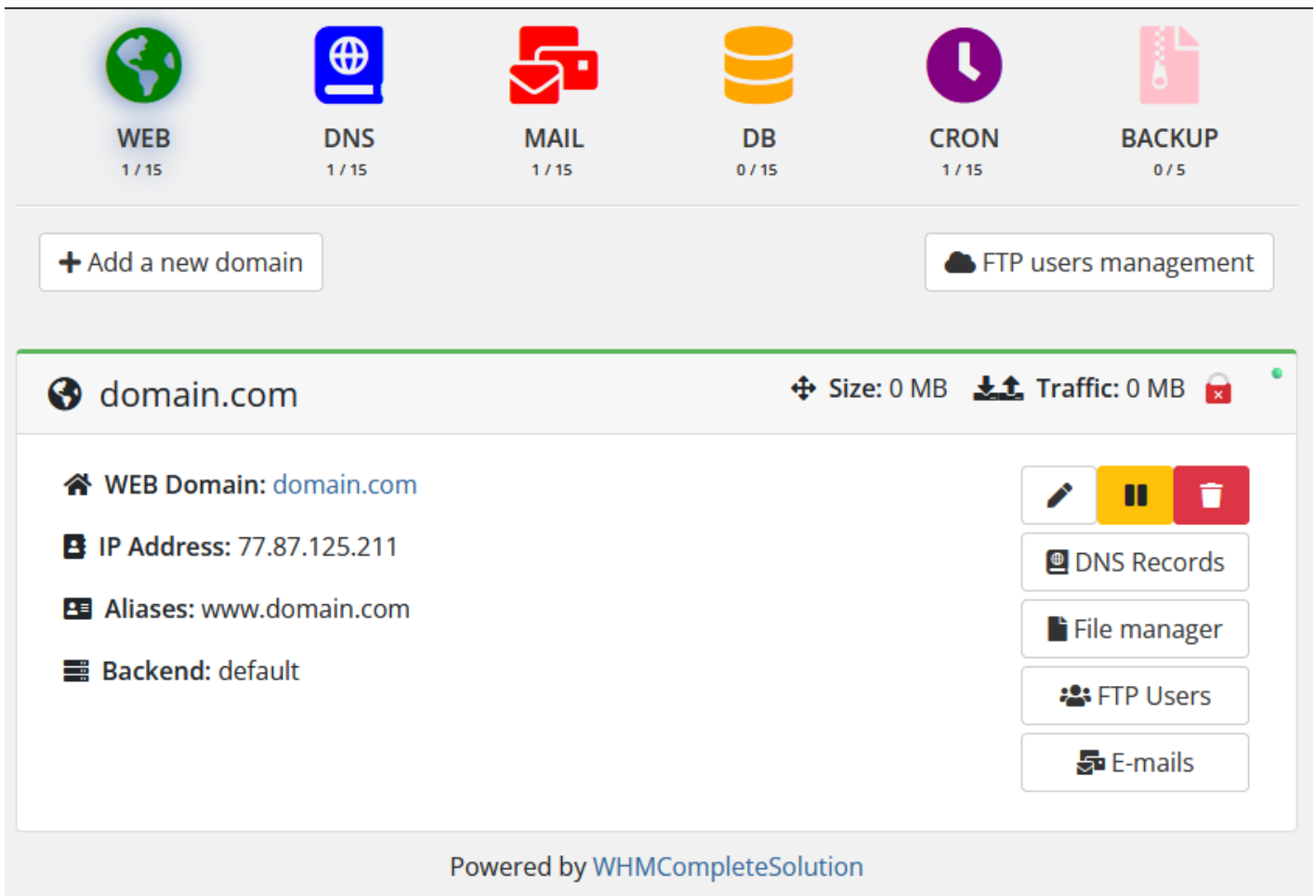
WEB section

HestiaCP module **WHMCS**

[Order now](#) | [Download](#) | [FAQ](#)

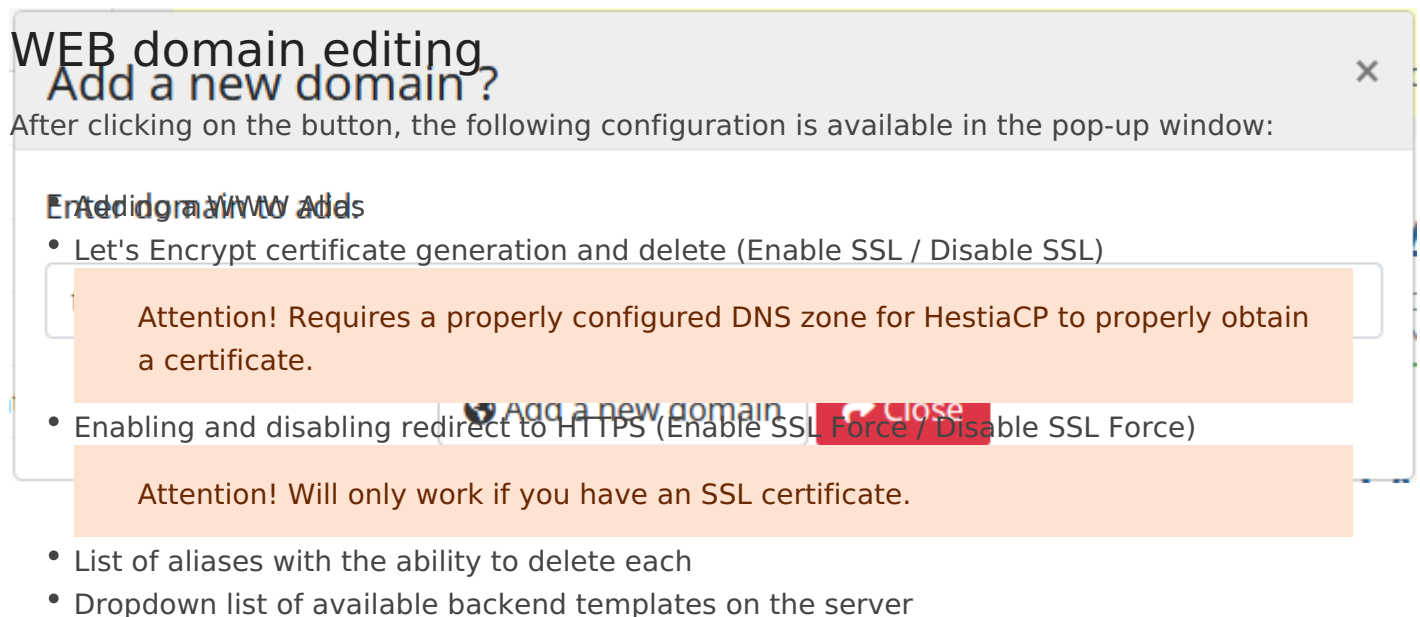
The end client, having entered the WEB section of the client panel, has access to the following information and parameters:

- Navigation bar and status information on each card.
- Button to go to add a new domain
- Button to go to FTP user management
- Cards with information about the client's WEB domains
 - Domain name
 - SSL certificate status 
 - Domain name status in the system HestiaCP is suspended or not suspended (Active) 
 - IP Address
 - Aliases
 - Backend
 - Disk Space (Size)
 - Bandwidth (Traffic)
 - Button to go to domain DNS zone settings
 - Button to go to the root of the site (if you have enabled and configured the file manager)
 - Button to go to the mail domain management section
 - Buttons for managing WEB domain
 - Edit
 - Suspend / Unsuspend
 - Delete



Adding a new WEB domain

After clicking on the button in the pop-up window, you must enter the name of the domain that you want to add. DNS Zones and Mail Domain will also be created



Attention! Web domains are the main setting. When creating a new web domain, a DNS zone will be created as well as a Mail domain. Also, if you delete the Web domain, the DNS zone of this domain will be deleted as well as the Mail domain. It also works when Suspend / Unsuspend.

WEB domain suspend

Alias:

After clicking on the button, confirmation of the action is available in a pop-up window.

WEB domain unsuspend

Do you want to suspend your site test.com

×

After clicking on the button, confirmation of the action is available in a pop-up window.

WEB domain delete

Do you want to unsuspend your site test.com

×

After clicking on the button, confirmation of the action is available in a pop-up window.

Are you sure you want to delete the domain

×

Revision #14

Created 24 October 2022 12:47:50 by Dmytro Kravchenko

Updated 11 June 2024 09:50:41 by Yuliia Noha