

# Mikrotik WireGuard client configuration

Mikrotik WireGuard VPN module

## WISECP

[Order now](#) | [Download](#) | [FAQ](#)

Make sure you have an up to date **routerOS** system.

Version must be at least: 7.6

```
[admin@VPN-CLIENT] > system package print  
Columns: NAME, VERSION  
# NAME      VERSION  
0 routeros  7.6
```

Open a single-use shipment on the **WireGuard** section for the client's configuration request

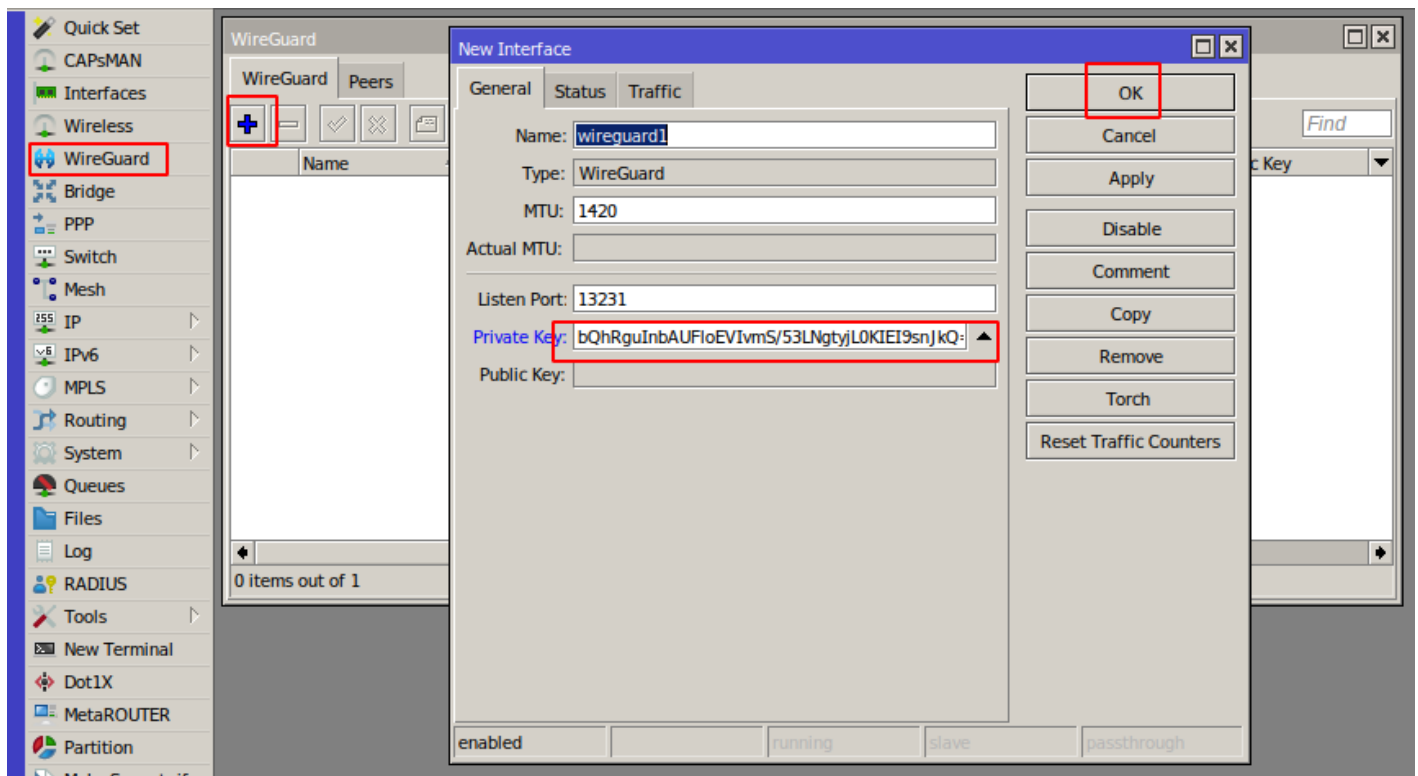
## Download config file

```
[Interface]
  Address = 10.0.110.15/24
  DNS = 10.0.110.1,77.87.125.200
  PrivateKey = KgbQhRguInbAUFloEVImS/53LNgtYjL0KIEI9snJkQ=

[Peer]
  AllowedIPs = 0.0.0.0/0
  PersistentKeepalive = 5
  Endpoint = 77.87.125.200:51930
  PublicKey = xbrwVHxNZ8UsjHQyyzFwm0Ey1UC+wwKQ0FG/cLoJh2w=
```

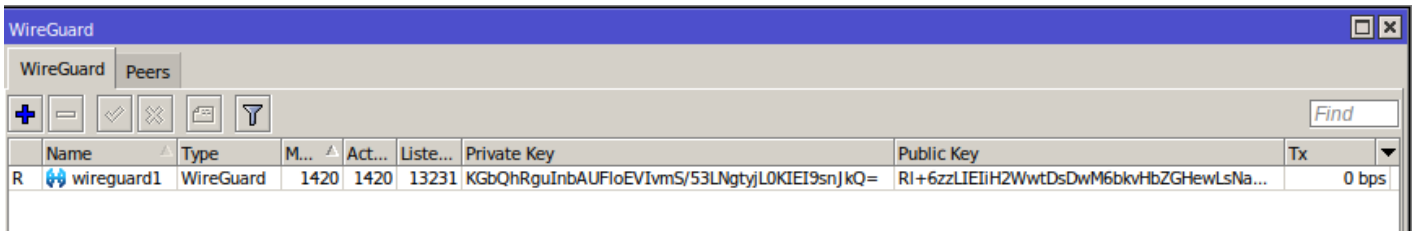
## Login to Mikrotik via Winbox

Click on the menu item **WireGuard** In the window that opens, in the **WireGuard** tab, click the plus to add a new **WireGuard** interface



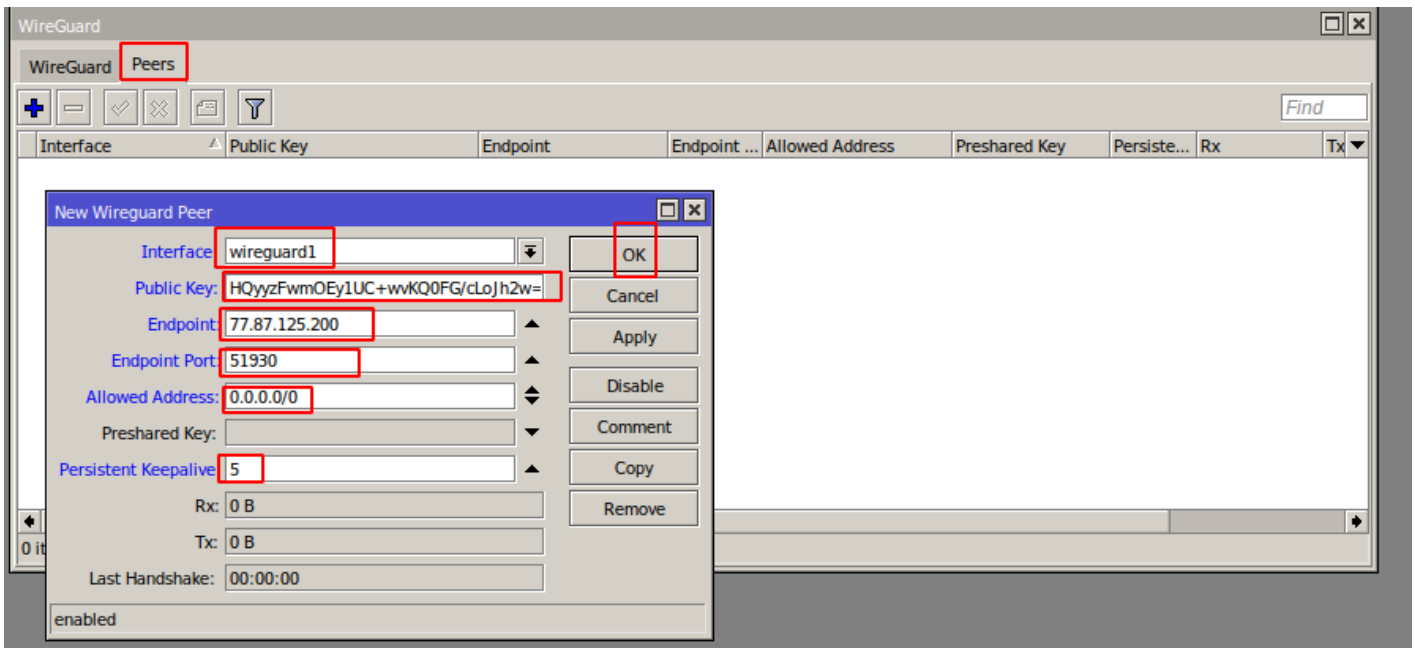
Copy the private key from the text configuration from the **[Interface]** section to the **PrivateKey** field in the **WireGuard** interface settings in **Mikrotik**

Click **OK** to create the interface



Go to the peers tab.

Click plus to add a new peer



**Interface** - Select the previously created **WireGuard** interface

**Public key** - Copy the public key from the text configuration from the **[Peer]** section to the Public key field

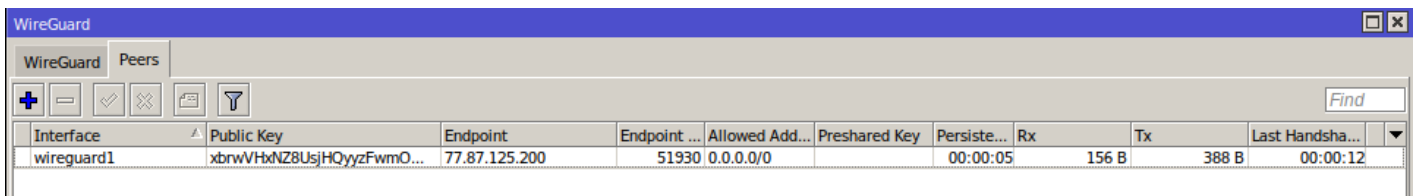
**Endpoint** - Copy the server **address** from the text configuration from the **[Peer]** section to the endpoint field

**Endpoint Port** - Copy the server **port** from the text configuration from the **[Peer]** section to the Endpoint Port field

**Allowed Address** - Copy **AllowedIPs** from the text configuration from the **[Peer]** section to the Allowed Address field

**Persistent Keepalive** - Copy the **PersistentKeepalive** from the text configuration from the **[Peer]** section to the Persistent Keepalive field

Click **OK** to create a peer

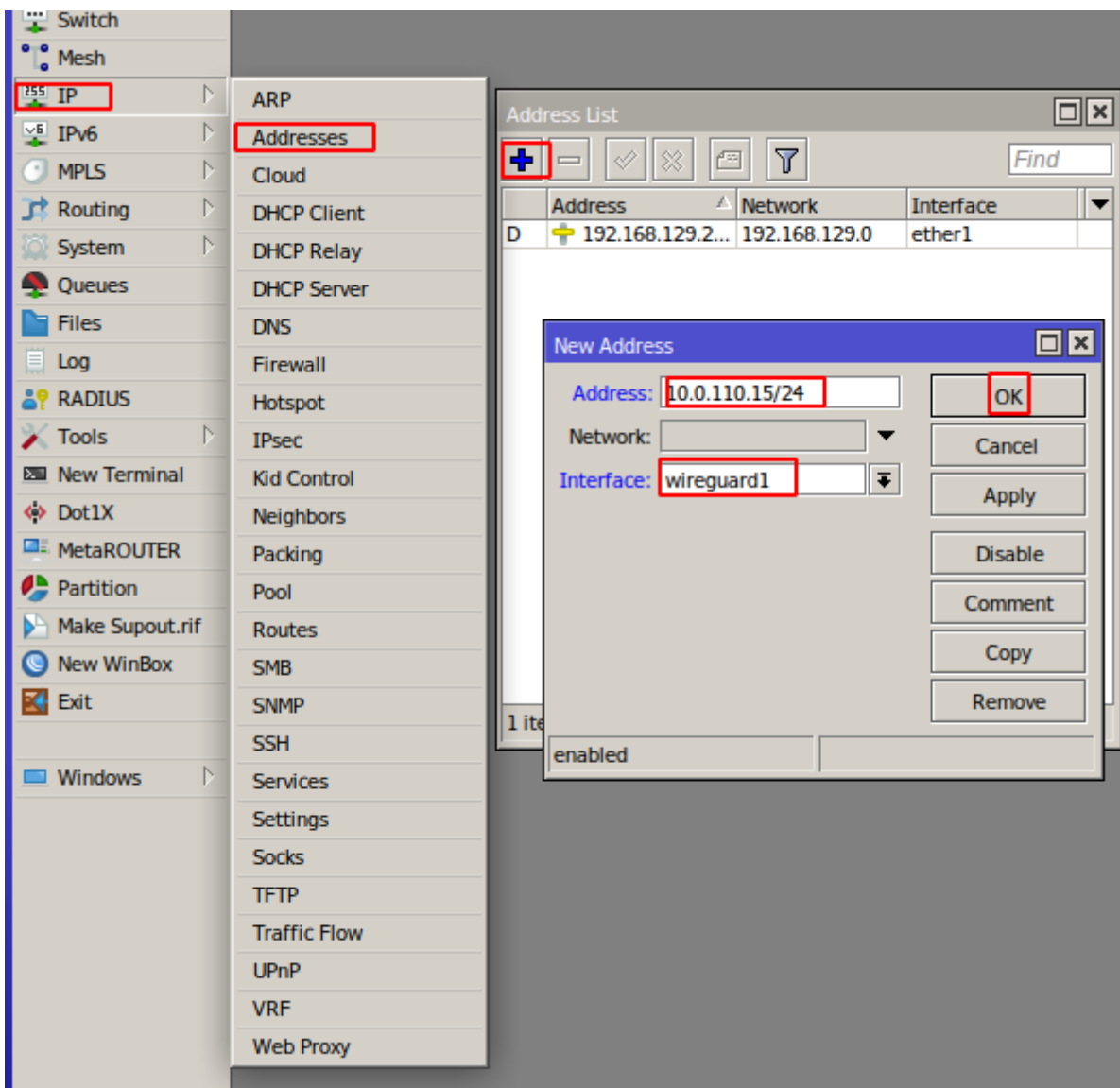


The image shows the 'WireGuard' window in Mikrotik WinBox. It has a 'WireGuard' tab and a 'Peers' tab. Below the tabs is a toolbar with icons for adding, removing, enabling, disabling, saving, and filtering. A 'Find' search bar is on the right. Below the toolbar is a table with the following columns: Interface, Public Key, Endpoint, Endpoint ..., Allowed Add..., Preshared Key, Persiste..., Rx, Tx, and Last Handsha... The table contains one entry for 'wireguard1'.

Interface	Public Key	Endpoint	Endpoint ...	Allowed Add...	Preshared Key	Persiste...	Rx	Tx	Last Handsha...
wireguard1	xbrwVHbNZ8UsjHQyyzFwmO...	77.87.125.200	51930	0.0.0.0/0		00:00:05	156 B	388 B	00:00:12

In order to have communication with the server, you need to set the address on the **WireGuard** interface

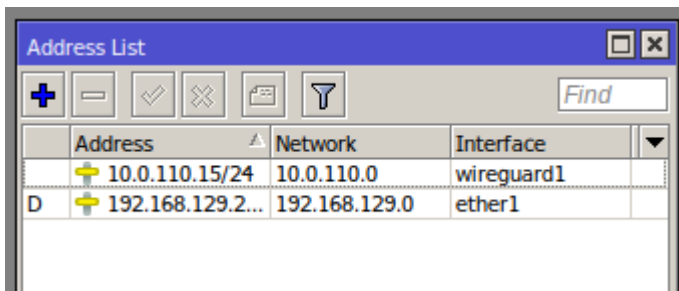
Go to the menu item **IP->Addresses** In the window that opens, click the plus to assign an IP address to the WireGuard interface



**Adresse** - Copy the Address from the text configuration from the **[Interface]** section to the Address field

**Interface** - Select the previously created **WireGuard** interface

Press the OK button to confirm



You also need to configure the traffic routes you need at your discretion.

---

Revision #1

Created 25 November 2023 12:19:42 by Ruslan

Updated 25 November 2023 12:21:13 by Ruslan