

# Mikrotik WireGuard client configuration

[Order now](#) | [Download](#) | [FAQ](#)

## Configuring Mikrotik as an WireGuard Client.

Make sure you have an up to date **routerOS** system.

Version must be at least: 7.6

```
[admin@VPN-CLIENT] > system package print
Columns: NAME, VERSION
# NAME      VERSION
0 routeros  7.6
```

Open a single-use shipment on the **WireGuard** section for the client's configuration request

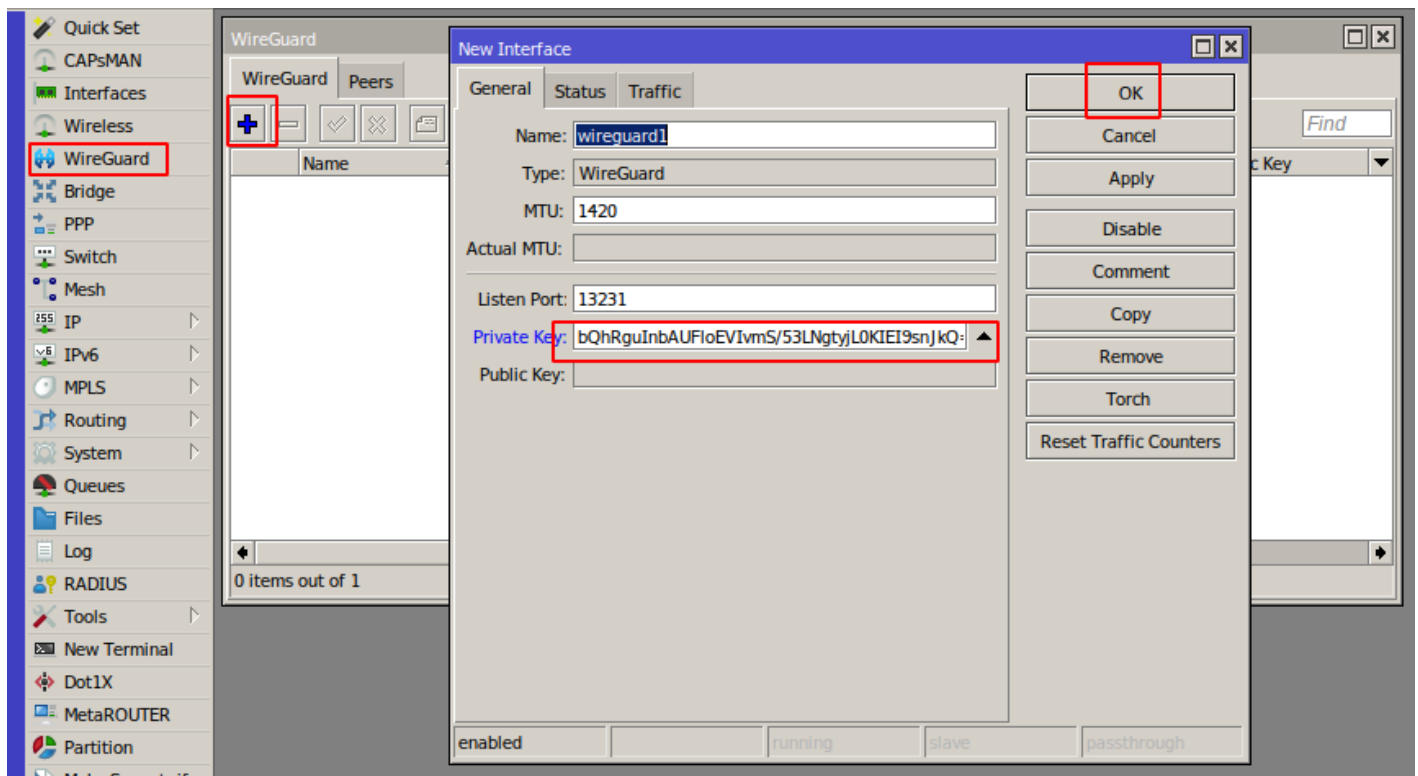
## Download config file

```
[Interface]
  Address = 10.0.110.15/24
  DNS = 10.0.110.1,77.87.125.200
  PrivateKey = KgbQhRguInbAUFloEVlvmS/53LNgtYjL0KIEI9snJkQ=

[Peer]
  AllowedIPs = 0.0.0.0/0
  PersistentKeepalive = 5
  Endpoint = 77.87.125.200:51930
  PublicKey = xbrwVHxNZ8UsjHQyyzFwm0Ey1UC+wwKQ0FG/cLoJh2w=
```

## Login to Mikrotik via Winbox

Click on the menu item **WireGuard** In the window that opens, in the **WireGuard** tab, click the plus to add a new **WireGuard** interface



Copy the private key from the text configuration from the **[Interface]** section to the **PrivateKey** field in the **WireGuard** interface settings in **Mikrotik**

Click **OK** to create the interface



Go to the peers tab.

Click plus to add a new peer



**Interface** - Select the previously created **WireGuard** interface

**Public key** - Copy the public key from the text configuration from the **[Peer]** section to the Public key field

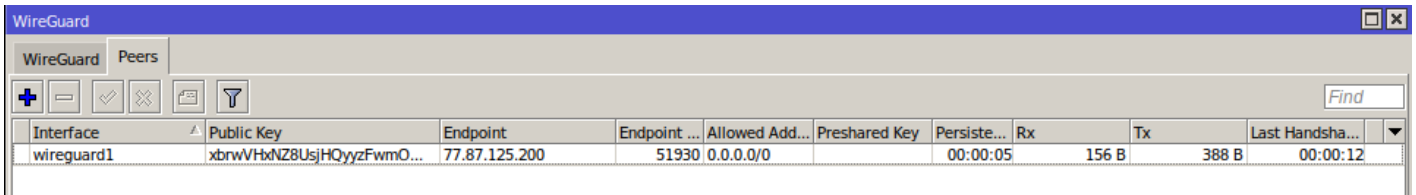
**Endpoint** - Copy the server **address** from the text configuration from the **[Peer]** section to the endpoint field

**Endpoint Port** - Copy the server **port** from the text configuration from the **[Peer]** section to the Endpoint Port field

**Allowed Address** - Copy **AllowedIPs** from the text configuration from the **[Peer]** section to the Allowed Address field

**Persistent Keepalive** - Copy the **PersistentKeepalive** from the text configuration from the **[Peer]** section to the Persistent Keepalive field

Click **OK** to create a peer

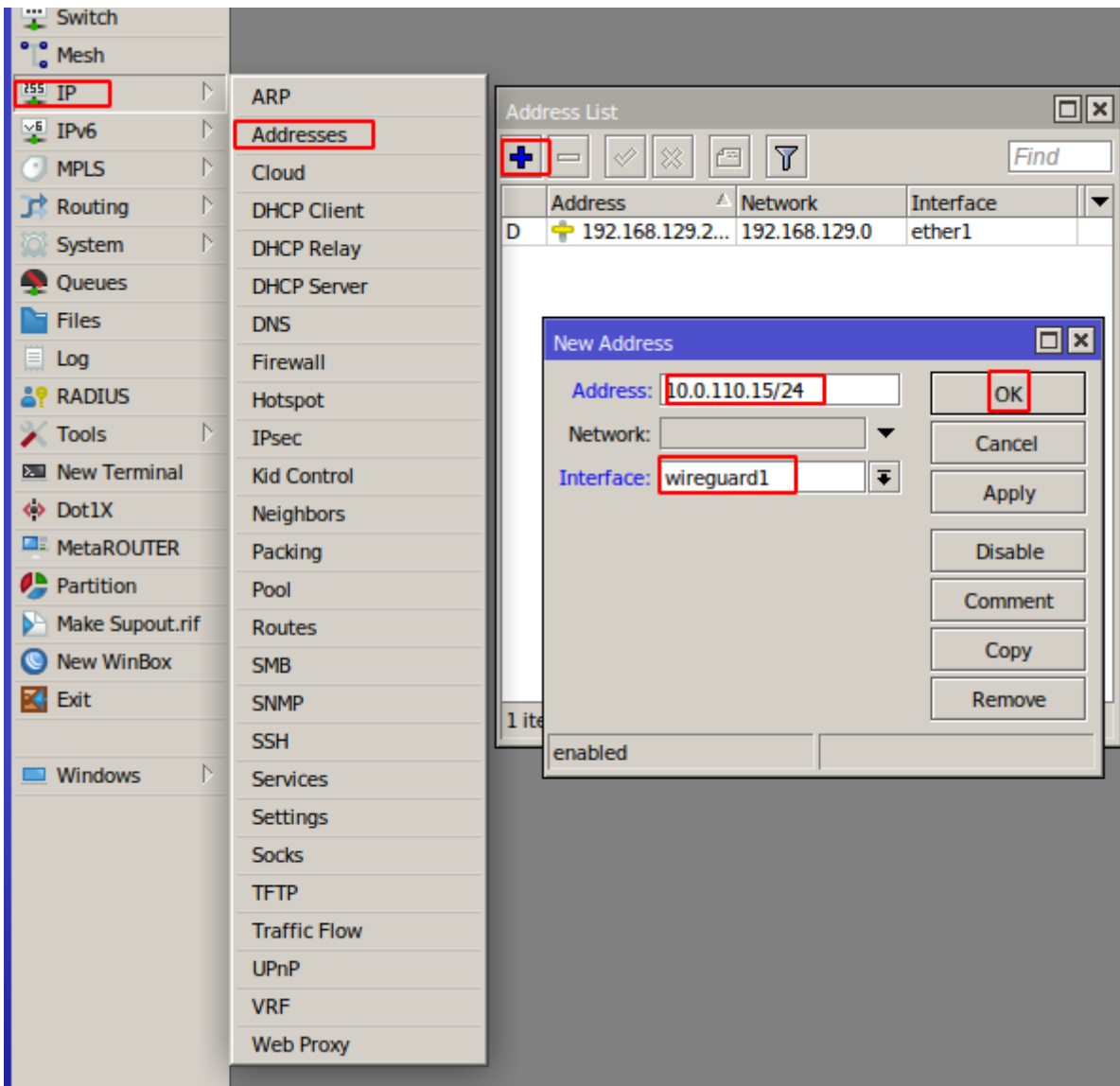


The image shows the 'WireGuard' window in a network configuration tool. It has a 'WireGuard' tab and a 'Peers' tab. Below the tabs is a toolbar with icons for adding, removing, and filtering. A table lists the configuration for the 'wireguard1' interface.

Interface	Public Key	Endpoint	Endpoint ...	Allowed Add...	Preshared Key	Persiste...	Rx	Tx	Last Handsha...
wireguard1	xbrwVHbNZ8UsjHQyyzFwmO...	77.87.125.200	51930	0.0.0.0/0		00:00:05	156 B	388 B	00:00:12

In order to have communication with the server, you need to set the address on the **WireGuard** interface

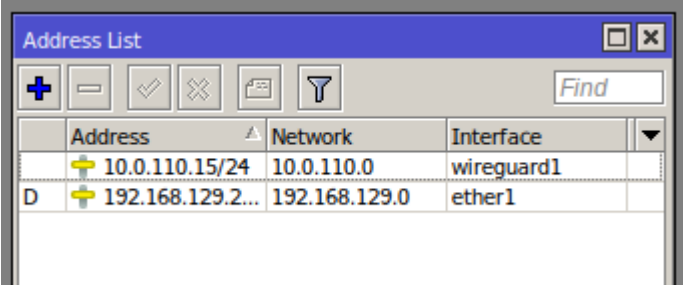
Go to the menu item **IP->Addresses** In the window that opens, click the plus to assign an IP address to the WireGuard interface



**Adresse** - Copy the Address from the text configuration from the **[Interface]** section to the Address field

**Interface** - Select the previously created **WireGuard** interface

Press the OK button to confirm



You also need to configure the traffic routes you need at your discretion.