

Synology part setup guide

Synology module **WHMCS**

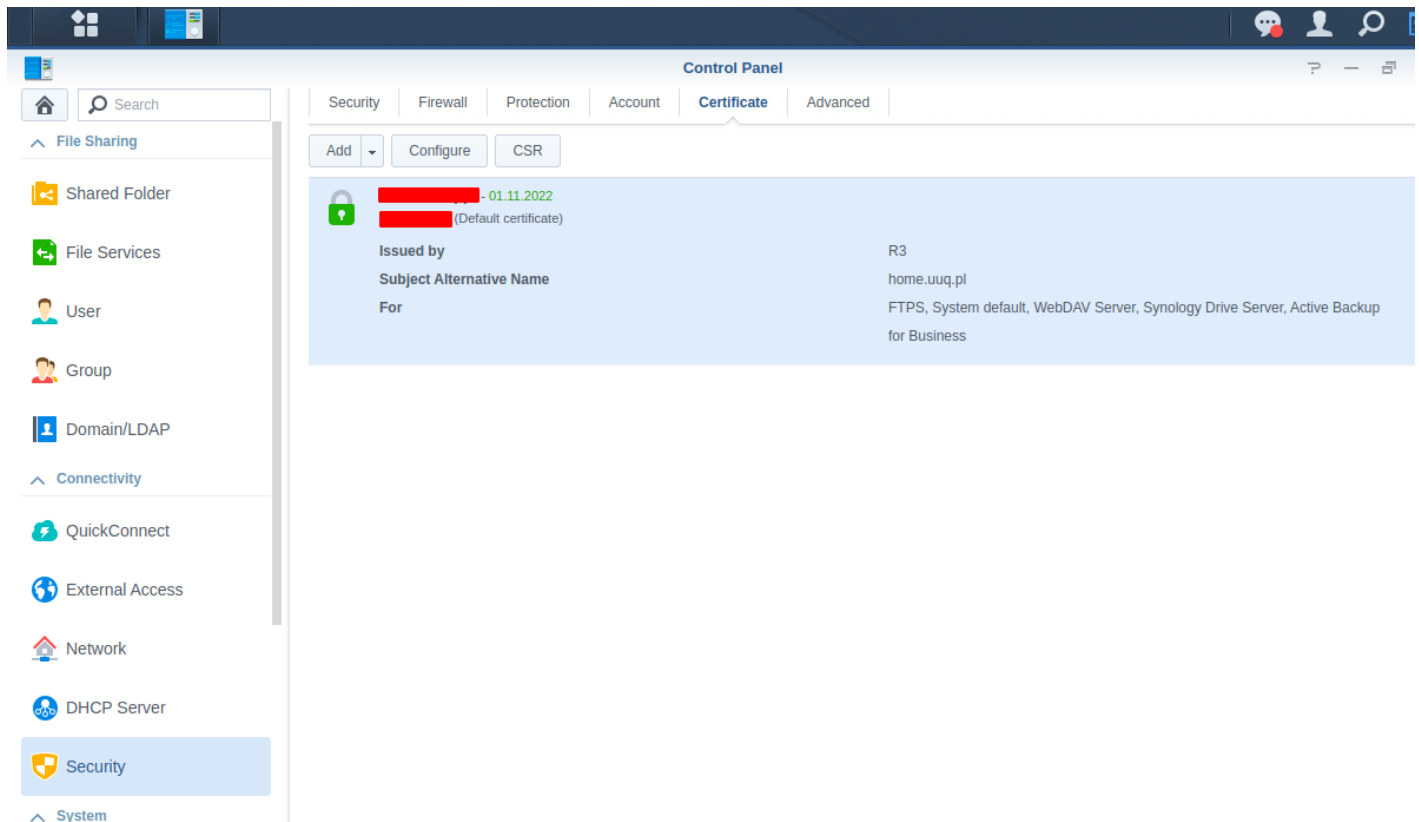
[Order now](#) | [Download](#) | [FAQ](#)

Here are the initial steps of configuring Synology devices to prepare them for use with the WHMCS module.

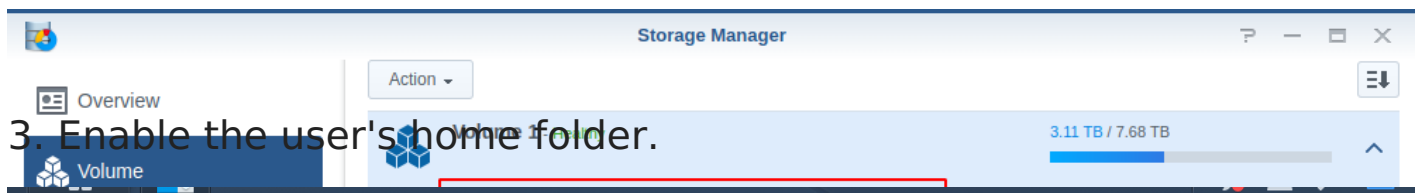
At the beginning, you should prepare the appropriate domain with the correct DNS entries so that you can generate a correct SSL certificate for Your Synology NAS server.

1. Generate an SSL certificate for your domain.

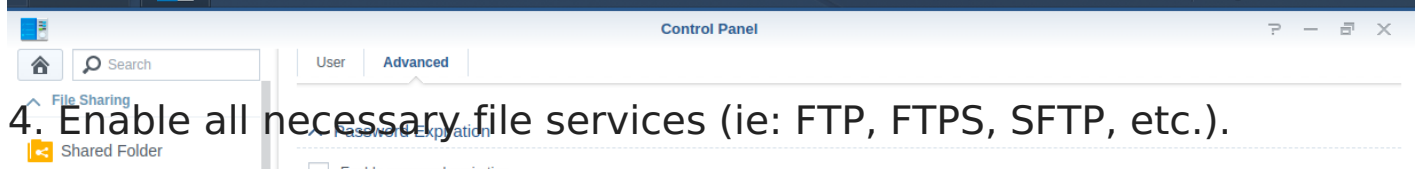
Connect the certificate for all services that will be used in the server.(FTPS, System, Synology Drive, etc...)



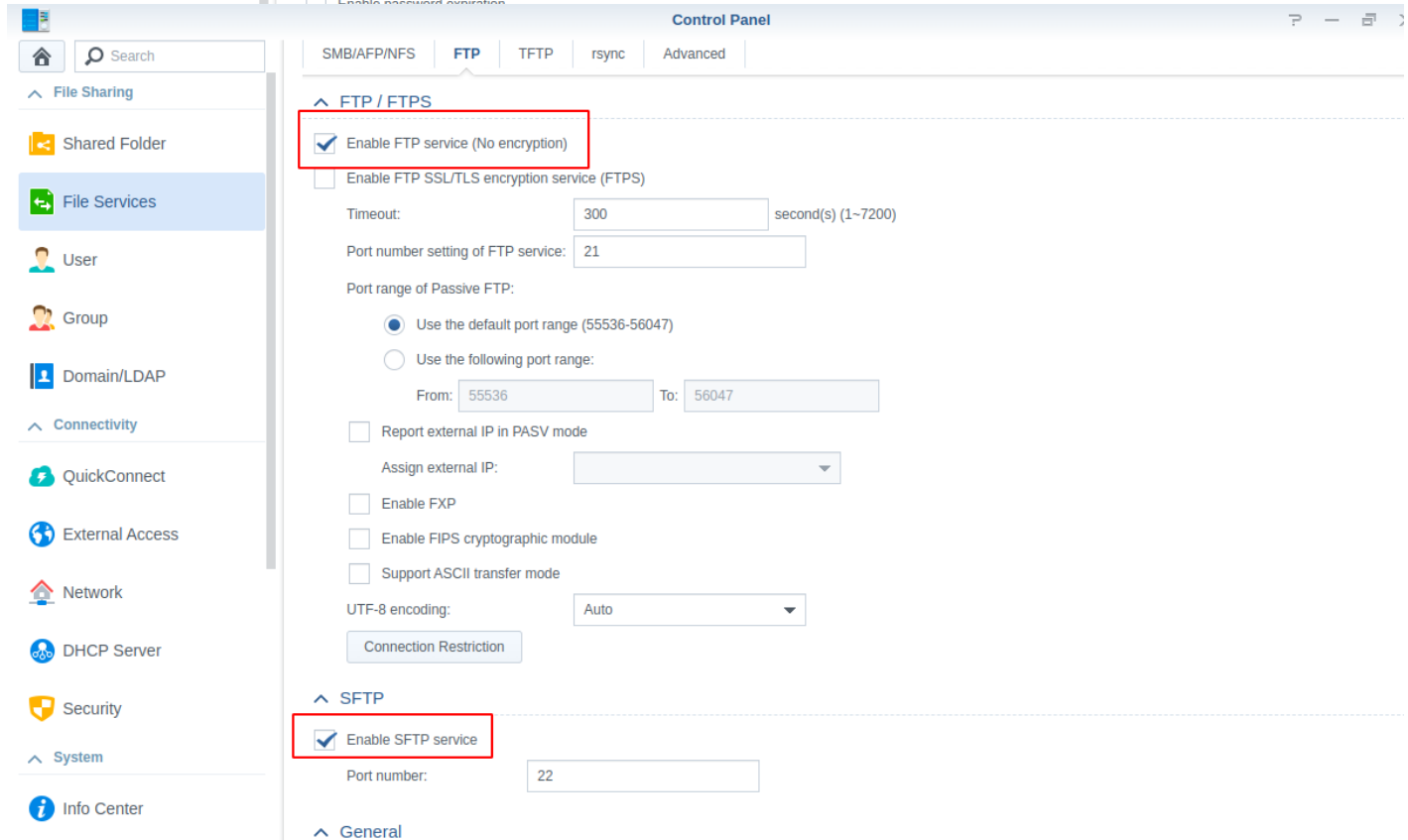
2. Make sure the partition is formatted in BTRFS



3. Enable the user's home folder.



4. Enable all necessary file services (ie: FTP, FTPS, SFTP, etc.).



5. Create user groups with the necessary quotas and permissions.

Control Panel

Home

Search

File Sharing

Shared Folder

File Services

User

Group

Domain/LDAP

Connectivity

QuickConnect

External Access

Network

DHCP Server

Security

CreateEditDeleteEdit Members

Name

Description

10G

administratorsSystem default admin group

httpSystem default group for Web services

usersSystem default group

10G

Group InformationPermissionsQuotaApplicationsSpeed Limit

Volume/Shared fol...DescriptionQuotaUnitEnable quota

Volume 1-

ActiveBacku...-0GB

homesuser home10GB

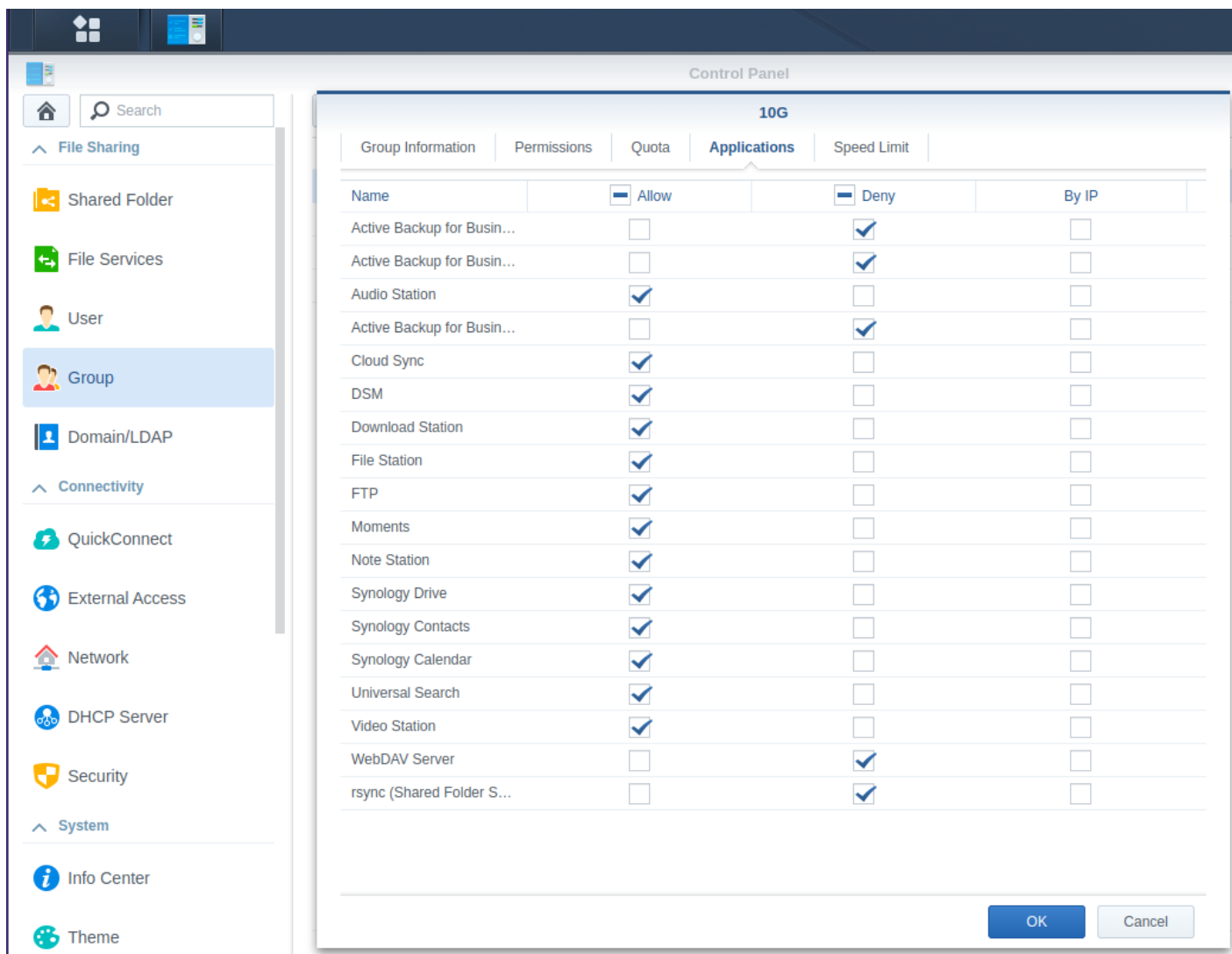
musicSystem default sh...0GB

NetBackupSystem default sh...0GB

video-0GB

webSystem default sh...0GB

OKCancel



Revision #10

Created 9 August 2022 10:13:19 by Ruslan

Updated 11 June 2024 09:30:18 by Yuliia Noha